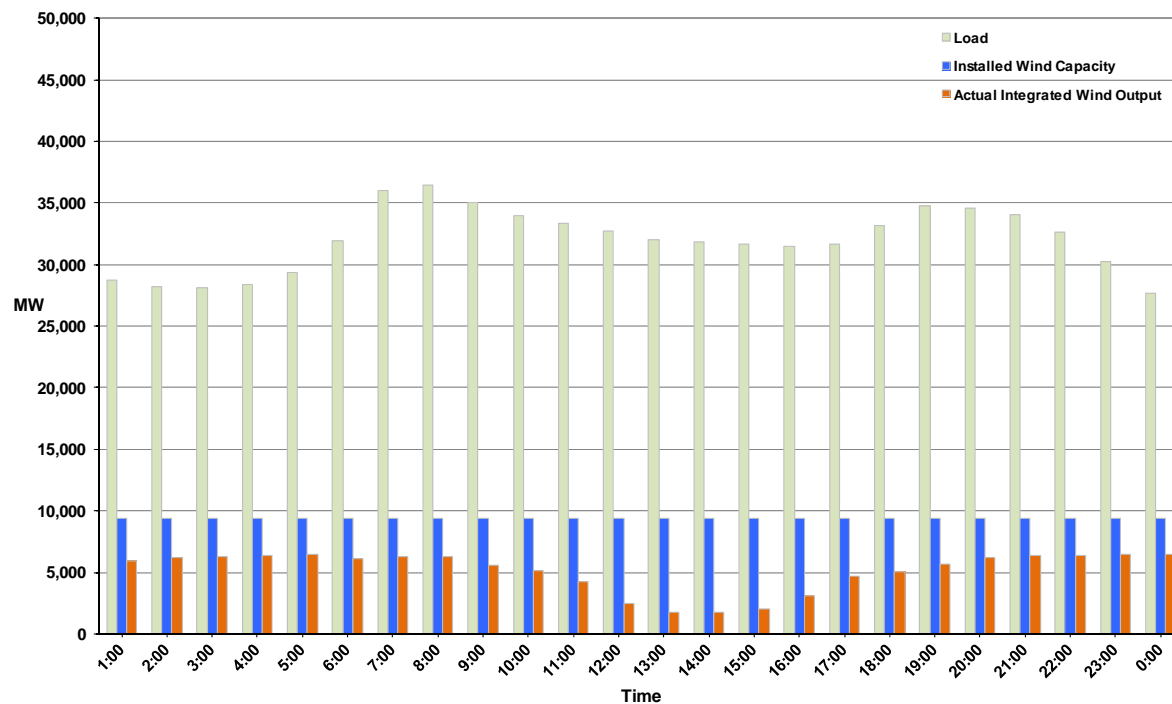




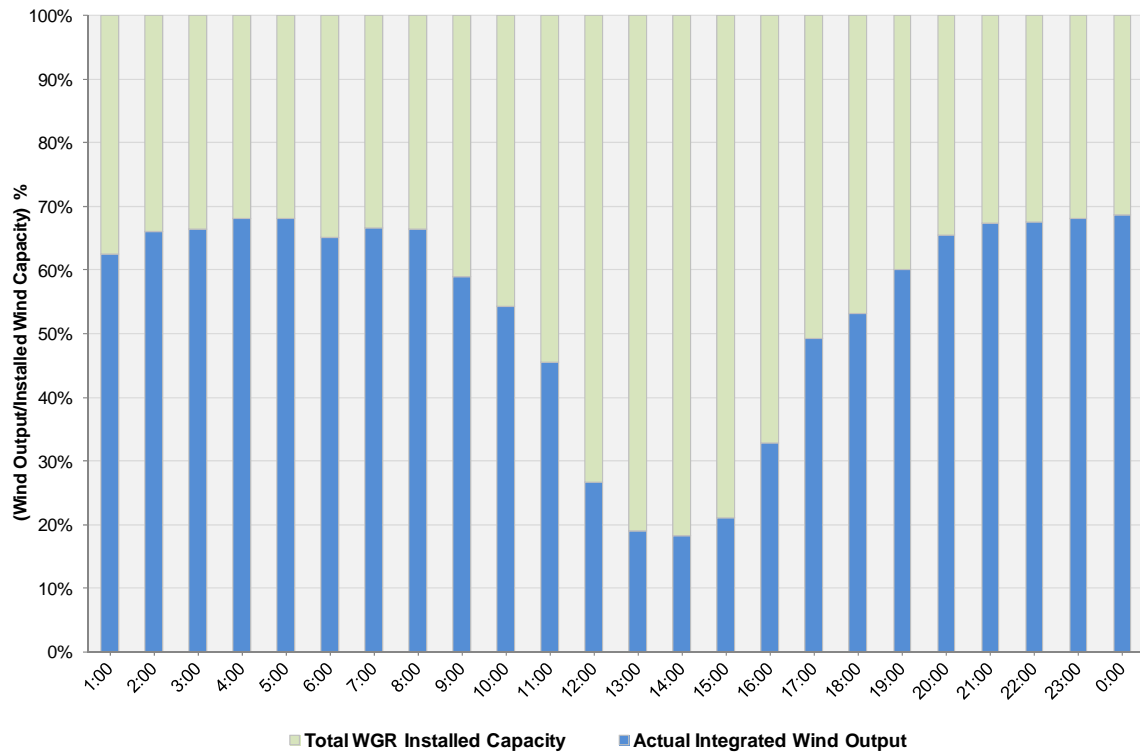
## ERCOT Grid Operations Wind Integration Report: 12/01/11

Peak Load	<b>36,478 MW</b>
Load Peak Hour	<b>08</b>
Wind over Peak	<b>6,262 MW</b>
Wind Record 10/07/11	<b>7,400 MW</b>
Max Wind Value	<b>6,643 MW</b>
Wind Peak Time	<b>23:07</b>
Wind Integration %	<b>23.22%</b>

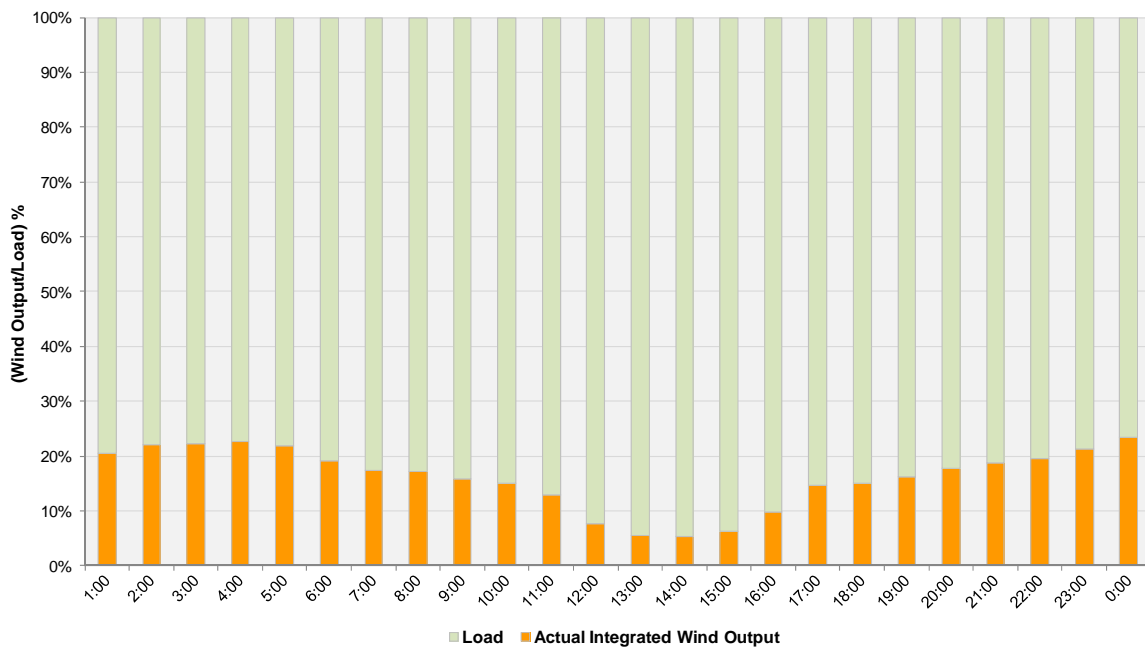
**Hourly Average Actual Load vs. Actual Wind Output  
12-01-2011**



**Actual Wind Output as a Percentage of the Total Installed Wind Capacity**  
**12-01-2011**



**Actual Wind Output as a Percentage of the ERCOT Load**  
**12-01-2011**



ERCOT Load vs. Actual Wind Output 11/24/2011 - 12/1/2011

